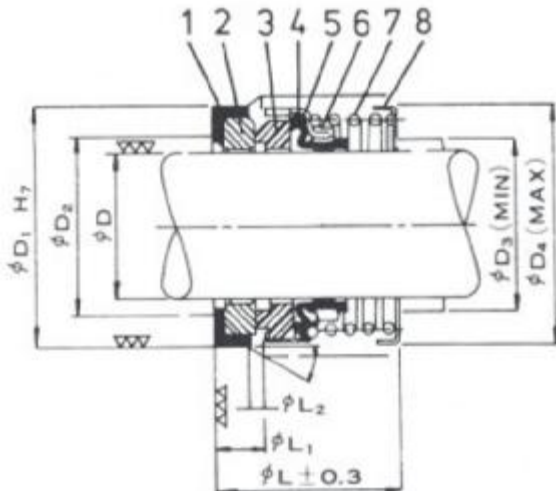
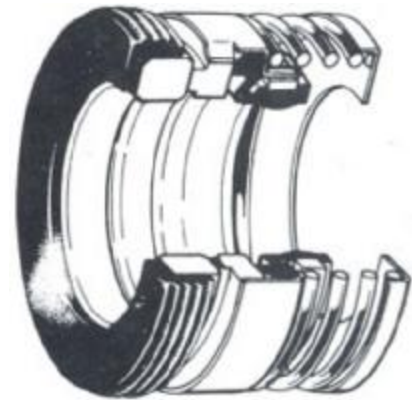


MECHANICAL SHAFT SEALS

UA TYPE



Item	Description	Material
1	Cup Gasket	NBR
2	Stationary Face	Ceramic
3	Rotary Face	Carbon
4	Bellow	NBR
5	Retainer	SUS304
6	Drive Ring	SUS304
7	Coil Spring	SUS304
8	Spring Retainer	SUS304

Special Requirement for Material Please Consult Our Office.

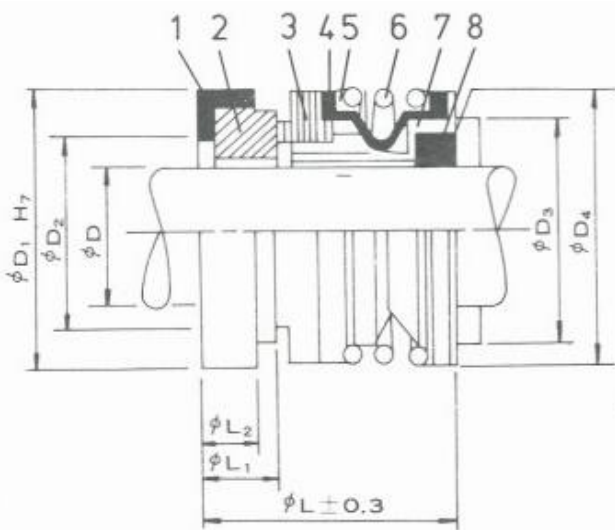
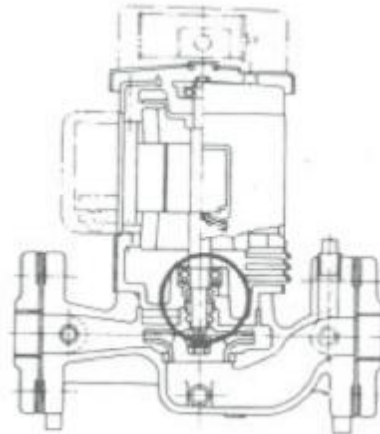
Diam	D	D1	D2	D3	D4	L	L1	L2
3/8	9.525	22.225	14.3	12.7	23.5	28.6	6.4	1
1/2	12.700	25.400	17.5	15.9	26.0	28.6	6.4	1
5/8	15.875	31.750	20.6	19.1	30.0	32.5	8.7	1
3/4	19.050	34.925	23.8	22.2	32.5	32.5	8.7	1
7/8	22.225	38.100	27.0	25.4	37.5	34.1	8.7	1
1	25.400	41.275	30.2	28.6	44.0	36.5	9.5	1
1 1/8	28.575	44.450	33.3	31.8	48.0	38.1	9.5	1
1 1/4	31.750	47.625	36.5	34.9	50.0	38.1	9.5	1
1 3/8	34.925	50.800	39.7	38.1	54.5	39.7	9.5	1
1 1/2	38.100	53.975	42.9	41.3	58.5	39.7	9.5	1
1 5/8	41.275	60.325	46.0	44.5	64.0	47.6	11.1	1
1 3/4	44.450	63.500	49.2	47.6	67.0	47.6	11.1	1
1 7/8	47.625	66.675	52.4	50.8	71.0	50.8	11.1	1
2	50.800	69.850	55.6	54.0	73.5	50.8	11.1	1

Diam	D	D1	D2	D3	D4	L	L1	L2
10	10	24	16	14	23.5	23	7	2
11	11	24	16	15	23.5	23	7	2
12	12	26	17	16	26.0	24	7	2
14	14	28	21	18	28.0	25	7	2
15	15	28	21	19	28.0	25	7	2
16	16	32	22	20	30.0	27	8	2
18	18	35	25	22	32.5	26	8	2
19	19	35	25	23	32.5	26	8	2
20	20	38	27	24	35.5	28	8	2
22	22	40	29	26	37.5	28	8	2
25	25	44	32	29	42.0	29	9	2
28	28	46	34	32	45.5	30	9	2
30	30	50	38	35	48.0	31	9	2
32	32	54	40	37	50.0	33	9	2
35	35	58	44	40	54.5	36	10	2
38	38	60	46	43	58.5	37	10	2
40	40	64	48	45	62.5	38	10	2
45	45	65	52	50	66.5	40	10	2
50	50	72	58	55	72.5	42	10	2

Applications : Pressure : -720mmHg~7kg/cm²G
 Temperature : -20°C~+100°C.

MECHANICAL SHAFT SEALS

UB TYPE



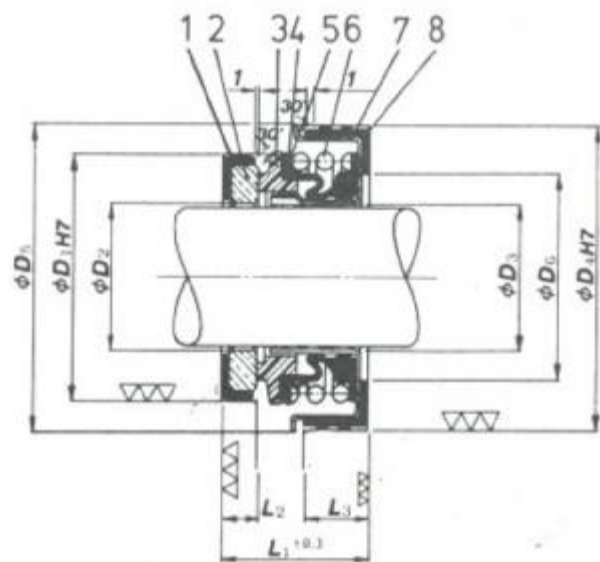
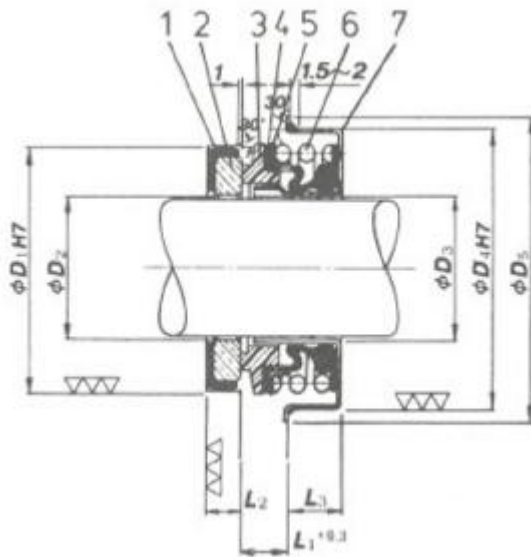
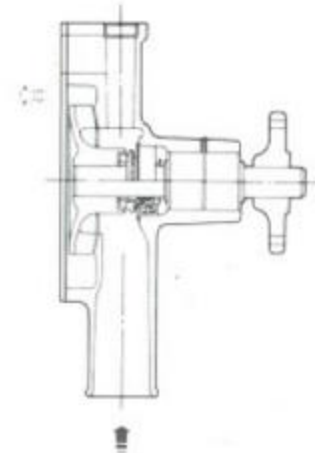
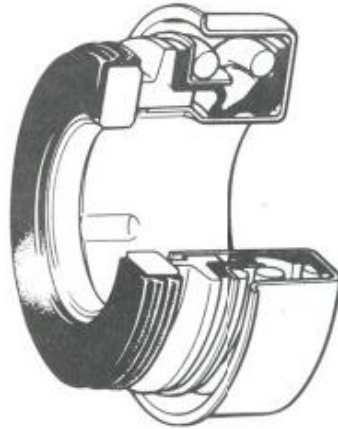
Item	Description	Material
1	Cup Gasket	NBR
2	Stationary Face	Ceramic
3	Rotary Face	Carbon
4	Bellow	NBR
5	Spring Retainer	SUS304
6	Coil Spring	SUS304
7	Deive Shell	SUS304
8	Drive Ring	SUS304

Special Requirement for Material Please
Consult Our Office.

Diam	D±0.05	D +0.05 1 -0.00	D2	L2	L1	D3	D4	L±0.03
3/8"	9.525	22.225	14.300	4.760	6.350	17.420	23.800	22.225
1/2"	12.700	25.400	17.450	4.760	6.350	20.625	26.970	22.800
5/8"	15.875	31.750	20.625	8.712	10.287	23.800	30.937	30.124
3/4"	19.050	34.925	23.800	8.712	10.287	26.970	34.112	30.124
1"	25.400	41.275	30.150	9.525	11.100	33.325	42.850	31.725

Applications : Pressure : -720mmHg~7kg/cm²G
Temperature : -20°C~+100°C.

MECHANICAL SHAFT SEALS UD TYPE



Item	Description	Material
1	Cup Gasket	NBR
2	Stationary Face	Ceramic
3	Rotary Face	Carbon
4	Bellow	NBR
5	Spring Retainer	SUS304
6	Coil Spring	SUS304
7	Retainer	SUS304

Item	Description	Material
1	Cup Gasket	NBR
2	Stationary Face	Ceramic
3	Rotary Face	Carbon
4	Bellow	NBR
5	Spring Retainer	SUS304
6	Coil Spring	SUS304
7	Retainer	SUS304
8	Cup Gasket	NBR

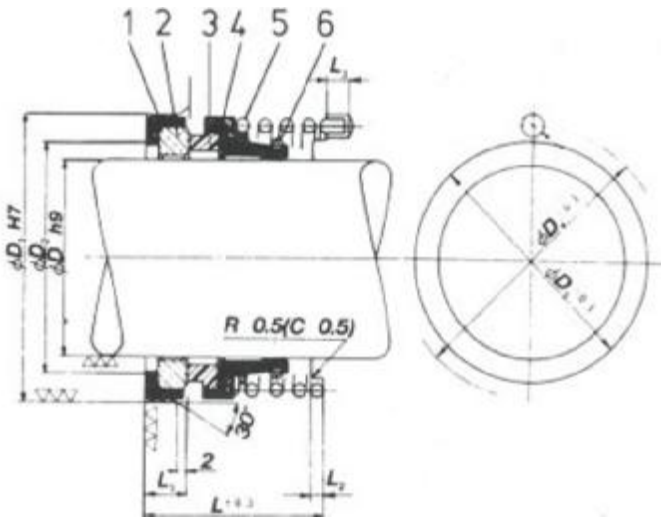
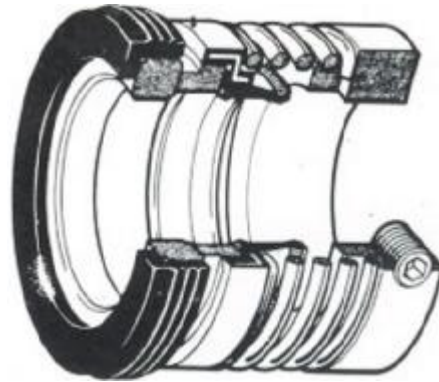
Diam	D1	D2	D3	D4	D5	L1	L2	L3
13	25	14	14.2	28.55	31.7	10.2	5	8
17	31	18	18.2	36.45	41.3	11.8	5	8
20	35	21	21.4	40.00	43.7	11.0	5	9.5
25	44	29	26.4	46.00	51.0	15.0	7	10
30	48	32	31.0	52.00	57.0	16.0	8	11

Diam	D1	D2	D3	D4	D5	D6	L1	L2	L3
13	25	14	14	32	32	20	19	5	8.5
17	31	18	18	41	41	22	22	5	9.5
20	35	21	21	45	44	30	23	5	11
25	44	29	26	52	51.0	35	27.0	7	11.5
30	48	32	31.0	58	57.0	40	29.0	8	12.5

Applications : Pressure : -500mmHg~3kg/cm²G
 Temperature : -20°C~+100°C.

Special Requirement for Material Please
 Consult Our Office.

MECHANICAL SHAFT SEALS UG TYPE



Item	Description	Material
1	Cup Gasket	NBR
2	Stationary Face	Ceramic
3	Rotary Face	Carbon
4	Rubber Bellow	NBR
5	Spring	SUS304
6	Coil Spring	SUS304

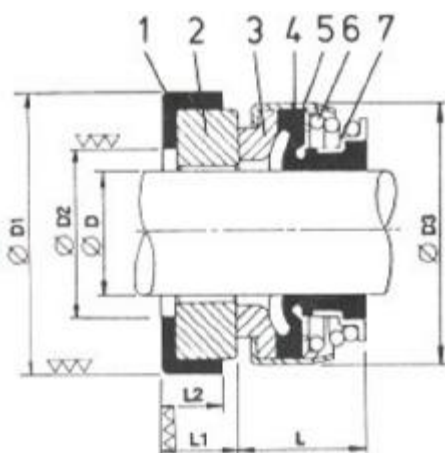
Special Requirement for Material Please Consult Our Office.

Diam	D	D1	D2	D3	D4	D5	L	L1	L2	L3
8	8	21	13	13	16.0	2.5	18	7	2	4
9	9	24	16	17	20.0	2.5	23	7	2	4
10	10	24	16	17	20.0	2.5	23	7	2	4
11	11	24	16	17	20.0	2.5	23	7	2	4
12	12	26	17	19	22.5	3.0	24	7	2	4
13	13	26	17	19	22.5	3.0	24	7	2	4
14	14	28	21	21	24.5	3.0	25	7	3	4
15	15	28	21	21	24.5	3.0	25	7	3	4
16	16	32	22	24	28.5	4.0	27	8	3	4
17	17	32	22	24	28.5	4.0	27	8	3	4
18	18	35	25	27	31.5	4.0	29	8	3	4
19	19	35	25	27	31.5	4.0	29	8	3	4
20	20	38	27	29	33.5	4.0	31	8	3	5

Diam	D	D1	D2	D3	D4	D5	L	L1	L2	L3
22	22	40	29	30	34.5	4.0	32	8	4	6
25	25	44	32	33	37.5	4.0	33	9	4	6
28	28	46	34	36	40.5	4.0	34	9	4	6
30	30	50	38	39	44.5	5.0	35	9	4	6
32	32	54	40	42	47.5	5.0	37	9	4	6
35	35	58	44	45	50.5	5.0	40	10	4	6
38	38	60	46	48	53.5	5.0	42	10	5	7
40	40	64	48	50	56.5	6.0	43	10	5	7
45	45	66	52	55	61.5	6.0	45	10	5	7
50	50	72	58	60	66.5	6.0	47	10	5	7

Applications : Pressure : -650mmHg~5kg/cm²G
 Temperature : -20°C~+100°C.

MECHANICAL SHAFT SEALS H TYPE



Item	Description	Material
1	Cup Gasket	NBR
2	Stationary Face	Ceramic
3	Rotary Face	Carbon
4	Bellow	NBR
5	Retainer	SUS304
6	Spring Retainer	SUS304
7	Coil Spring	SUS304

Special Requirement for Material Please
Consult Our Office.

Application Pressure : 5kg/cm²G
Temperature : -20°C~+100°C.

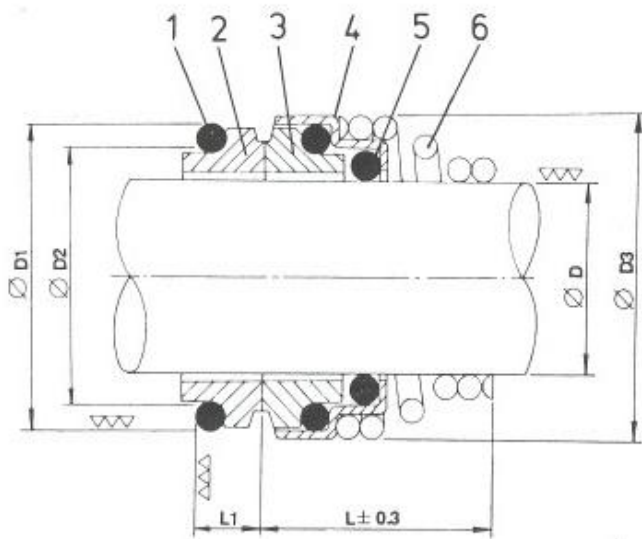
Diam	D	D1	D2	D3	L	L1	L2
6	6	22	8	18	8	4	3.5
8	8	26	10	24	11	8	6
10	10	26	12	24	11	8	6
11	11	26	13	24	11	8	6
12	12	26	14	24	11	8	6
12	12	26	14	24	13	8	6
13	13	26	15	24	13	8	6
14	14	30	16	32	13	8	6
15	15	30	17	32	13	8	6
16	16	30	18	32	13	8	6
16	16	38	18	39	13	8	6
17	17	42	19	39	13	8	6
18	18	42	20	39	13	8	6
19	19	42	21	39	13	8	6
20	20	42	22	39	13	8	6
20	20	45	22	42	13	10	8
22	22	45	24	42	13	10	8
23	23	50	25	47	14	10	8
24	24	50	26	47	14	10	8
25	25	50	27	42	14	10	8
25	25	50	27	47	14	10	8
26	26	50	29	47	14	10	8
27	27	50	30	47	14	10	8
28	28	57	31	54	15	10	8
30	30	57	33	54	15	10	8
32	32	57	35	54	15	10	8
35	35	63	38	60	16	10	8
38	38	68	41	65	18	12	9
40	40	68	43	65	18	12	9
45	45	73	48	70	20	12	9
50	50	88	52	85	23	15	12
55	55	88	58	85	23	15	12
60	60	110	63	105	30	15	12

MECHANICAL SHAFT SEALS P TYPE



Item	Description	Material
1	O-Ring	NBR
2	Stationary Face	Carbon
3	Rotary	Ceramic
4	Retainer	SUS304
5	O-Ring	NBR
6	Coil Spring	SUS304

Special Requirement for Material Please Consult Our Office.

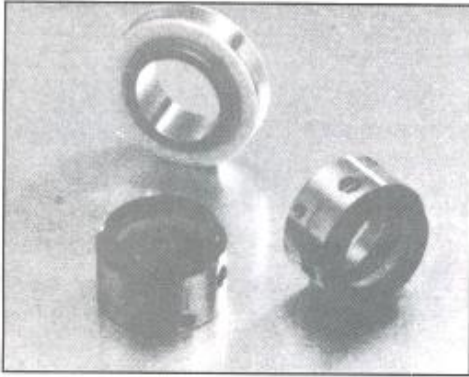


Diam	D	D1	D2	D3	L±0.3	L1
10	10	18	14	20	15	5.5
11	11	21	17	22	18	5.5
12	12	21	17	22	18	5.5
13	13	23	19	25	22	6
14	15	23	19	25	22	6
15	15	27	21	29	22	7
16	16	27	21	29	23	7
17	17	27	21	29	23	7
18	18	31	25	33	24	8
19	19	31	25	33	25	8
20	20	31	25	33	25	8
21	21	35	30	38	25	8
22	22	35	30	38	25	8
23	23	35	30	38	27	8
24	24	35	30	38	27	8
25	25	38	33	40	27	8.5
28	28	43	38	46	29	9
29	29	43	38	46	30	9
30	30	43	38	46	30	9
32	32	43	38	46	30	9
33	33	54	45	48	39	12
35	35	54	45	50	39	12
38	38	81	52	58	39	12
40	40	81	52	58	39	12

Applications : Pressure : 7kg/cm²G
 Temperature : -20°C~+100°C.

MECHANICAL SHAFT SEALS FOR CHEMICAL PROCESS

TB TYPE



Applications :

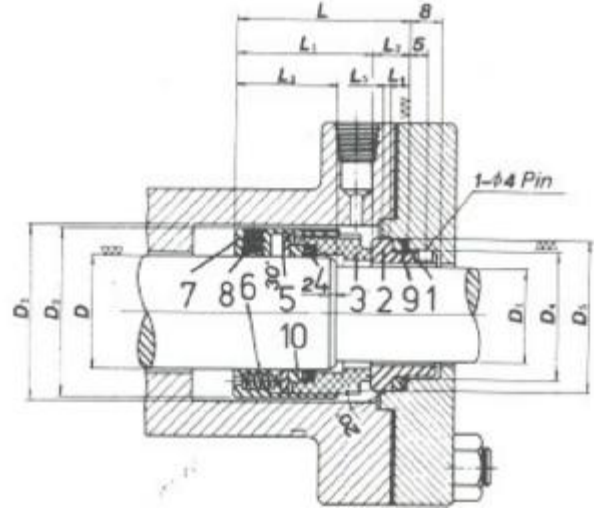
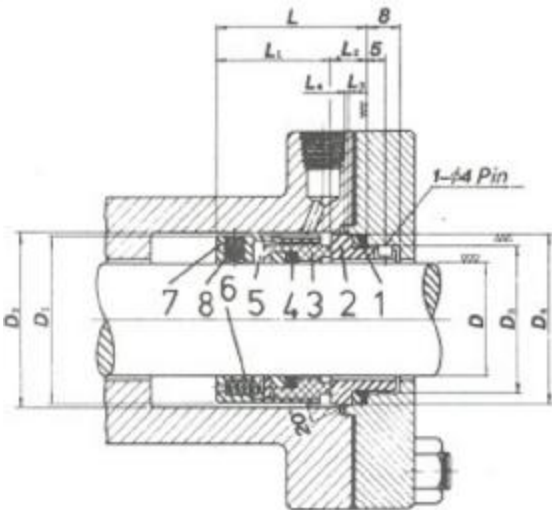
Max. Pressure – 16kg/cm²G

Temperature range – 80°C ~ +250°C

Max. circumferential speed – 25m/sec.

Max. viscosity – 300CP.

Slurry – 0.1%



Item	Description	Material
1	O-Ring	FPM
2	Floating Seat	TC/ SUS 316
3	Seal Ring	Carbon
4	O-Ring	FPM
5	Compression Ring	SUS316
6	Coil Spring	SUS316
7	Collar	SUS316
8	Set Screw	SUS316

Special Requirement for Material Please Consult Our Office.

Item	Description	Material
1	V-Packing	PTFE
2	Floating Seat	TC/SUS316
3	Seal Ring	Carbon
4	V-Packing	PTFE
5	Compression Ring	SUS316
6	Coil Spring	SUS316
7	Collar	SUS316
8	Set Screw	SUS316
9	Adapter	PTFE
10	Adapter	PTFE

D	D1	D2	D3	D4	L	L1	L2	L3	L4
30	44	46	39	45	40	32	8	5	1
35	49	51	14	50	40	32	8	5	1
40	56	60	52	58	45	34	11	5	2
45	61	65	57	63	45	34	11	5	2
50	67	70	62	68	46	34	12	5	2
55	72	75	67	73	46	34	12	5	2
60	80	85	72	81	48	36	12	5	2.5
65	85	90	77	86	48	36	12	7	2.5
70	91	95	83	92	52	38	13	7	2.5
75	99	104	88	97	55	41	14	7	2.5
80	104	109	96	105	55	41	14	7	2.5
85	109	114	101	110	56	42	14	7	2.5
90	114	119	106	115	57	43	14	7	2.5
95	119	124	111	120	57	43	14	7	2.5
100	124	129	116	125	57	43	14	7	2.5

D	D1	D2	D3	D4	D5	L	L1	L2	L3	L4	L5
30	25	44	46	34	40	48	40	8	28	5	2
35	30	49	51	39	45	48	40	8	28	5	2
40	35	56	60	44	50	49	41	8	29	5	2
45	40	61	65	52	58	52	41	11	29	5	2
50	45	67	70	57	63	53	42	11	30	5	2
55	50	72	75	62	68	55	43	12	30	5	2
60	55	80	85	67	73	57	45	12	32	5	2
65	60	85	90	72	81	57	45	12	32	7	2.5
70	65	91	95	77	86	57	45	12	32	7	2.5
75	70	99	104	83	92	62	48	14	34	7	2.5
80	75	104	109	88	97	62	48	14	34	7	2.5
85	80	109	114	96	105	62	48	14	34	7	2.5
90	85	114	119	101	110	63	49	14	35	7	2.5
95	90	119	124	106	114	63	49	14	35	7	2.5
100	95	124	129	111	120	63	49	14	35	7	2.5

MECHANICAL SHAFT SEALS FOR CHEMICAL PROCESS

SA TYPE (UNBALANCE)



Application range

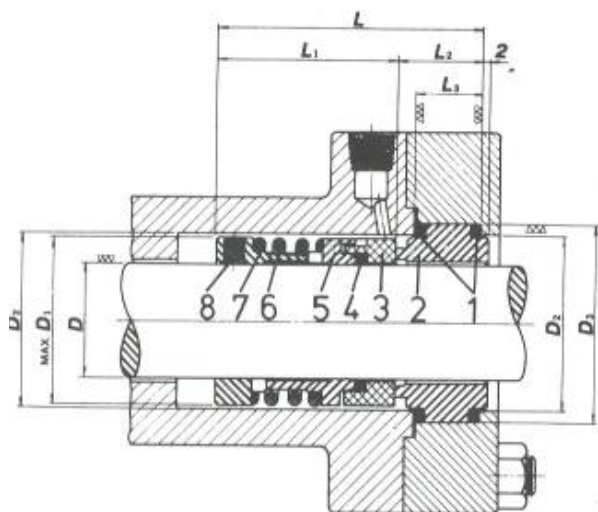
Max. Pressure – 12kg/cm²G

Temperature range – – 80° ~ +250°C

Max. Circumferential speed – 15m/sec

Max. Viscosity – 150,000CP

Slurry – 1.0%



D	D1	D2	D3	L	L1	L	L1	L2	L3
20	34	36	42	64	41	69	46	23	18
22	36	38	44	64	41	69	46	23	18
24	38	40	46	66	43	71	48	23	18
25	39	41	47	66	43	71	48	23	18
28	42	44	50	68	45	73	50	23	18
30	44	46	52	68	45	73	50	23	18
32	46	48	54	68	45	73	50	23	18
33	47	49	55	68	45	73	50	23	18
35	49	51	57	72	49	77	54	23	18
38	54	58	64	78	53	82	57	25	20
40	56	60	66	80	55	84	59	25	20
42	58	62	68	80	55	84	59	25	20
43	59	63	69	80	55	84	59	25	20
45	61	65	71	80	55	84	59	25	20
48	64	68	74	80	55	84	59	25	20
50	66	70	76	85	60	87	62	25	20
52	68	72	78	86	61	88	63	25	20
53	69	73	79	86	61	88	63	25	20
55	71	75	81	86	61	88	63	25	20
58	76	83	89	91	63	94	66	28	22
60	78	85	91	91	63	94	66	28	22
62	80	87	93	91	63	94	66	28	22
63	81	88	94	91	63	94	66	28	22
65	84	90	96	95	67	98	70	28	22
68	87	93	99	97	67	100	70	30	24
70	90	95	101	98	68	101	71	30	24
75	95	104	110	102	72	105	75	30	24
80	100	109	115	103	72	106	75	31	25
85	107	114	120	108	77	111	80	31	25
90	112	119	125	108	77	111	80	31	25
95	119	124	130	113	82	116	85	31	25
100	124	129	135	113	82	116	85	31	25

Item	Description	Material
1	O-Ring	PTFE
2	Floating Seat	Carbon
3	Seal Ring	TC/SUS316
4	V-Packing	PTFE
5	Compression Ring	SUS316
6	Coil spring	SUS316
7	Collar	SUS316
8	Set screw	SUS316

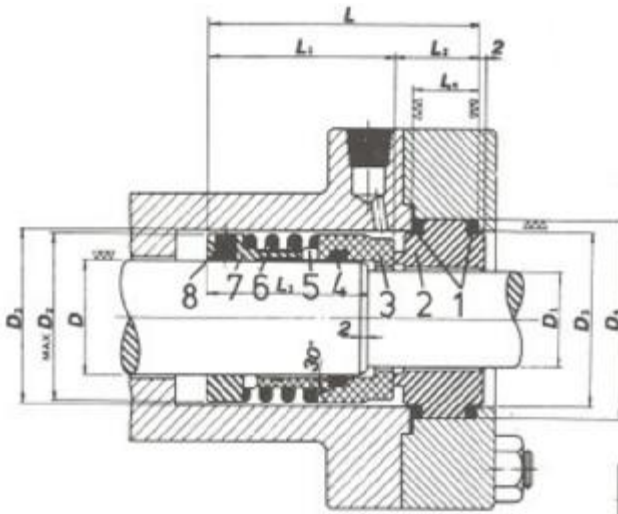
Special Requirement for Material Please Consult Our Office.

MECHANICAL SHAFT SEALS FOR CHEMICAL PROCESS

SB TYPE (BALANCE)



Application range
 Max. Pressure – 30k/cm²G
 Temperature range – – 20° ~ +200°C
 Max. circumferential speed – 15m/sec.
 Max. viscosity – 300,000CP
 Slurry – 7.0% max.



D	D1	D2	D3	D4	L	L1	L2	L3	L4
24	20	38	40	46	72	49	23	42	18
26	22	40	42	48	72	49	23	42	18
28	24	42	44	50	74	51	23	44	18
• 30	25	44	46	52	74	51	23	44	18
32	26	46	48	54	74	51	23	44	18
33	28	47	49	55	74	51	23	44	18
• 35	30	49	51	57	78	55	23	48	18
38	33	54	58	64	83	58	25	51	20
• 40	35	56	60	66	85	60	25	53	20
42	36	58	62	68	85	60	25	53	20
43	38	59	63	69	86	61	25	53	20
• 45	40	61	65	71	86	61	25	53	20
48	43	64	68	74	86	61	25	53	20
• 50	45	66	70	76	90	65	25	57	20
52	46	68	72	78	90	65	25	57	20
53	48	69	73	79	90	65	25	57	20
• 55	50	71	75	81	90	65	25	57	20
58	53	76	83	89	96	68	28	59	22
• 60	55	78	85	91	96	68	28	59	22
62	56	80	87	93	96	68	28	59	22
63	58	81	88	94	96	68	28	59	22
• 65	60	84	90	96	100	72	28	63	22
68	63	87	93	99	102	72	30	63	24
• 70	65	90	95	101	103	73	30	64	24
75	70	95	104	110	105	75	30	66	24
• 80	75	100	109	115	106	75	31	66	25
85	80	107	114	120	112	81	31	72	25
• 90	85	112	119	125	113	82	31	72	25
95	90	119	124	130	118	87	31	77	25
• 100	95	124	129	135	118	87	31	77	25
105	100	129	134	140	118	87	31	77	25

Item	Description	Material
1	O-Ring	PTFE
2	Floating Seat	Carbon
3	Seal Ring	TC/SUS316
4	V-Packing	PTFE
5	Compression Ring	SUS316
6	Coil spring	SUS316
7	Collar	SUS316
8	Set screw	SUS316

Special Requirement for Material Please
 Consult Our Office.