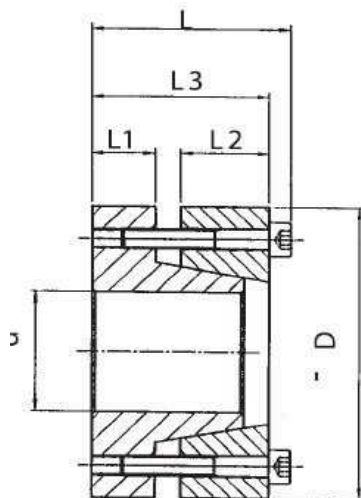


RCK 60



| Rozměry | | | | | | Kroučící moment | Axiální síla | Tlaky | | Utahovací šrouby | | | Vytlačovací závit | |
|---------|-----|----|----|----|----|-----------------|--------------|--------------------------|-------------------------|------------------|--------|------------------|-------------------|-------|
| Ød | ØD | L1 | L2 | L3 | L | Mt-Nm | N | Hřídél N/mm ² | Náboj N/mm ² | Počet | Typ | Utahovací moment | Typ | Počet |
| 20 | 47 | 10 | 14 | 28 | 34 | 245 | 29400 | 210 | 93 | 5 | M6x25 | 17 | M6 | 3 |
| 22 | 47 | 10 | 14 | 28 | 34 | 265 | 30000 | 196 | 93 | 5 | M6x25 | 17 | M6 | 3 |
| 24 | 50 | 10 | 14 | 28 | 34 | 370 | 32300 | 215 | 108 | 6 | M6x25 | 17 | M6 | 3 |
| 25 | 50 | 10 | 14 | 28 | 34 | 390 | 33300 | 210 | 108 | 6 | M6x25 | 17 | M6 | 3 |
| 30 | 55 | 10 | 14 | 28 | 34 | 480 | 41200 | 186 | 98 | 6 | M6x25 | 17 | M6 | 3 |
| 35 | 60 | 10 | 14 | 28 | 34 | 735 | 44100 | 186 | 108 | 8 | M6x25 | 17 | M6 | 4 |
| 38 | 65 | 10 | 14 | 28 | 34 | 790 | 46100 | 206 | 103 | 8 | M6x25 | 17 | M6 | 4 |
| 40 | 65 | 10 | 14 | 28 | 34 | 830 | 47000 | 186 | 103 | 8 | M6x25 | 17 | M6 | 4 |
| 42 | 75 | 12 | 18 | 35 | 43 | 1450 | 66000 | 225 | 132 | 7 | M8x30 | 41 | M8 | 4 |
| 45 | 75 | 12 | 18 | 35 | 43 | 1560 | 70000 | 220 | 132 | 7 | M8x30 | 41 | M8 | 4 |
| 50 | 80 | 12 | 18 | 35 | 43 | 1650 | 72000 | 206 | 127 | 7 | M8x30 | 41 | M8 | 4 |
| 55 | 85 | 12 | 18 | 35 | 43 | 2250 | 80000 | 210 | 132 | 8 | M8x30 | 41 | M8 | 4 |
| 60 | 90 | 12 | 18 | 35 | 43 | 2450 | 83000 | 186 | 122 | 8 | M8x30 | 41 | M8 | 4 |
| 65 | 95 | 12 | 18 | 35 | 43 | 2890 | 90000 | 200 | 132 | 9 | M8x30 | 41 | M8 | 3 |
| 70 | 110 | 16 | 24 | 46 | 56 | 130000 | 130000 | 220 | 140 | 8 | M10x40 | 83 | M10 | 4 |

RCK 60 je typ vhodný pro sestavy vyžadující střední až vyšší kroučící moment. Pracuje v opačném režimu než RCK 13.

www.ebeco.cz

EBECO CZ, s.r.o.