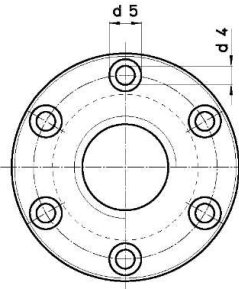
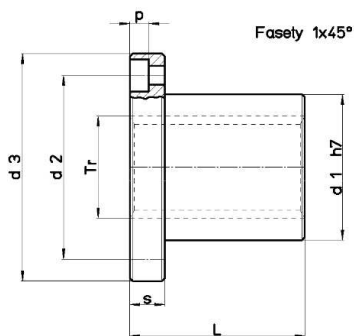
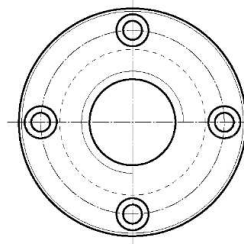


**Trapézové
matice FXN -
přírubová,
bronz**



od Tr 24x5 (6 der)



Do Tr 22x5 (4 der)

| Nut Stock no. RIGHT | Nut Stock no. LEFT | Diameter X lead | Thread starts | d1 m m | d2 m m | d3 mm | d4 mm | d5 mm | p mm | L mm | s m m | no. screw holes | Fastening screws (class 8,8) | Weight Kg/each | At mm ² (1) |
|----------------------------------|---------------------------------|-----------------------|------------------|--------------|--------------|----------|----------|----------|---------|---------|-------------|-----------------------|---------------------------------------|-------------------|------------------------------|
| FXN 10 A R | FXN 10 A L | Tr 10x3 | 1 | 18 | 26 | 37 | 4,5 | 7,5 | 4,2 | 22 | 8 | 4 | M4 | 0,088 | 294 |
| FXN 12 A R | FXN 12 A L | Tr 12x3 | 1 | 18 | 26 | 37 | 4,5 | 7,5 | 4,2 | 22 | 8 | 4 | M4 | 0,082 | 362 |
| FXN 12 B R | X | Tr 12x6 (P3) | 2 | 18 | 26 | 37 | 4,5 | 7,5 | 4,2 | 22 | 8 | 4 | M4 | 0,082 | 362 |
| FXN 14 A R | FXN 14 A L | Tr 14x4 | 1 | 20 | 30 | 42 | 5,5 | 9,5 | 5,2 | 25 | 10 | 4 | M5 | 0,123 | 470 |
| FXN 16 A R | FXN 16 A L | Tr 16x4 | 1 | 22 | 32 | 45 | 5,5 | 9,5 | 5,2 | 30 | 10 | 4 | M5 | 0,149 | 660 |
| FXN 16 B R | X | Tr 16x8 (P4) | 2 | 22 | 32 | 45 | 5,5 | 9,5 | 5,2 | 30 | 10 | 4 | M5 | 0,149 | 660 |
| FXN 18 A R | FXN 18 A L | Tr 18x4 | 1 | 25 | 35 | 48 | 5,5 | 9,5 | 5,2 | 35 | 10 | 4 | M5 | 0,188 | 880 |
| FXN 20 A R | FXN 20 A L | Tr 20x4 | 1 | 30 | 40 | 52 | 5,5 | 9,5 | 5,2 | 40 | 10 | 4 | M5 | 0,267 | 1130 |
| FXN 20 B R | X | Tr 20x8 (P4) | 2 | 30 | 40 | 52 | 5,5 | 9,5 | 5,2 | 40 | 10 | 4 | M5 | 0,267 | 1130 |
| FXN 20 D R | X | Tr 20x20 (P5) | 4 | 30 | 40 | 52 | 5,5 | 9,5 | 5,2 | 40 | 10 | 4 | M5 | 0,27 | 1100 |
| FXN 22 A R | FXN 22 A L | Tr 22x5 | 1 | 30 | 40 | 52 | 5,5 | 9,5 | 5,2 | 40 | 10 | 4 | M5 | 0,247 | 1225 |
| FXN 24 A R | FXN 24 A L | Tr 24x5 | 1 | 35 | 48 | 62 | 6,5 | 11 | 6,5 | 45 | 12 | 6 | M6 | 0,408 | 1520 |
| FXN 25 A R | FXN 25 A L | Tr 25x5 | 1 | 35 | 48 | 62 | 6,5 | 11 | 6,5 | 45 | 12 | 6 | M6 | 0,393 | 1590 |
| FXN 25 B R | X | Tr 25x10 (P5) | 2 | 35 | 48 | 62 | 6,5 | 11 | 6,5 | 45 | 12 | 6 | M6 | 0,393 | 1590 |
| FXN 25 E R | X | Tr 25x25 (P5) | 5 | 35 | 48 | 62 | 6,5 | 11 | 6,5 | 45 | 12 | 6 | M6 | 0,393 | 1590 |
| FXN 26 A R | FXN 26 A L | Tr 26x5 | 1 | 35 | 48 | 62 | 6,5 | 11 | 6,5 | 45 | 12 | 6 | M6 | 0,378 | 1660 |
| FXN 28 A R | FXN 28 A L | Tr 28x5 | 1 | 40 | 53 | 68 | 6,5 | 11 | 6,5 | 50 | 12 | 6 | M6 | 0,532 | 2000 |
| FXN 28 B R | X | Tr 28x10 (P5) | 2 | 40 | 53 | 68 | 6,5 | 11 | 6,5 | 50 | 12 | 6 | M6 | 0,532 | 2000 |
| FXN 30 A R | FXN 30 A L | Tr 30x6 | 1 | 40 | 53 | 68 | 6,5 | 11 | 6,5 | 50 | 12 | 6 | M6 | 0,497 | 2120 |
| FXN 30 B R | X | Tr 30x12 (P6) | 2 | 40 | 53 | 68 | 6,5 | 11 | 6,5 | 50 | 12 | 6 | M6 | 0,497 | 2120 |
| FXN 30 F R | X | Tr 30x30 (P5) | 6 | 40 | 53 | 68 | 6,5 | 11 | 6,5 | 50 | 12 | 6 | M6 | 0,492 | 2590 |
| FXN 32 A R | FXN 32 A L | Tr 32x6 | 1 | 40 | 53 | 68 | 6,5 | 11 | 6,5 | 50 | 12 | 6 | M6 | 0,455 | 2277 |
| FXN 35 A R | FXN 35 A L | Tr 35x6 | 1 | 50 | 63 | 78 | 8,5 | 14 | 8,5 | 60 | 15 | 6 | M8 | 0,883 | 3015 |
| FXN 36 A R | FXN 36 A L | Tr 36x6 | 1 | 50 | 63 | 78 | 8,5 | 14 | 8,5 | 60 | 15 | 6 | M8 | 0,854 | 3110 |
| FXN 40 A R | FXN 40 A L | Tr 40x7 | 1 | 55 | 68 | 84 | 8,5 | 14 | 8,5 | 65 | 15 | 6 | M8 | 1,066 | 3727 |
| FXN 40 B R | X | Tr 40x14 (P7) | 2 | 55 | 68 | 84 | 8,5 | 14 | 8,5 | 65 | 15 | 6 | M8 | 1,066 | 3727 |
| FXN 40 E R | X | Tr 40x40 (P8) | 5 | 55 | 68 | 84 | 8,5 | 14 | 8,5 | 65 | 15 | 6 | M8 | 1,075 | 3675 |
| FXN 44 A R | FXN 44 A L | Tr 44x7 | 1 | 55 | 72 | 90 | 8,5 | 14 | 8,5 | 65 | 15 | 6 | M8 | 1,029 | 4135 |
| FXN 45 A R | FXN 45 A L | Tr 45x8 | 1 | 55 | 72 | 90 | 8,5 | 14 | 8,5 | 65 | 15 | 6 | M8 | 0,999 | 4186 |
| FXN 50 A R | FXN 50 A L | Tr 50x8 | 1 | 65 | 80 | 100 | 10,5 | 17 | 10,5 | 80 | 20 | 6 | M10 | 1,749 | 5780 |
| FXN 55 A R | X | Tr 55x9 | 1 | 65 | 80 | 100 | 10,5 | 17 | 10,5 | 80 | 20 | 6 | M10 | 1,475 | 6345 |
| FXN 60 A R | FXN 60 A L | Tr 60x6 | 1 | 75 | 95 | 120 | 12,5 | 19 | 12,5 | 100 | 25 | 6 | M12 | 2,927 | 8718 |

Materiál: Cu Sn12 – C

www.ebeco.cz

ebeco cz, s.r.o.